

STATE OF ARKANSAS
STATE HIGHWAY COMMISSION

PLAN OF PROPOSED BRIDGES
WALNUT RIDGE - PARAGOULD
LAWRENCE AND GREENE
COUNTIES

ROUTE 25 SEC. 7 & 8

JOB No 5162

U. S. PUBLIC WORKS PROJECT NO. N.R.H.5D
N.R.H.242B

LIMITS OF PROJECT : ENDS OF BRIDGES AS SHOWN BELOW.

Sheet No. table with columns for sheet number and drawing number.

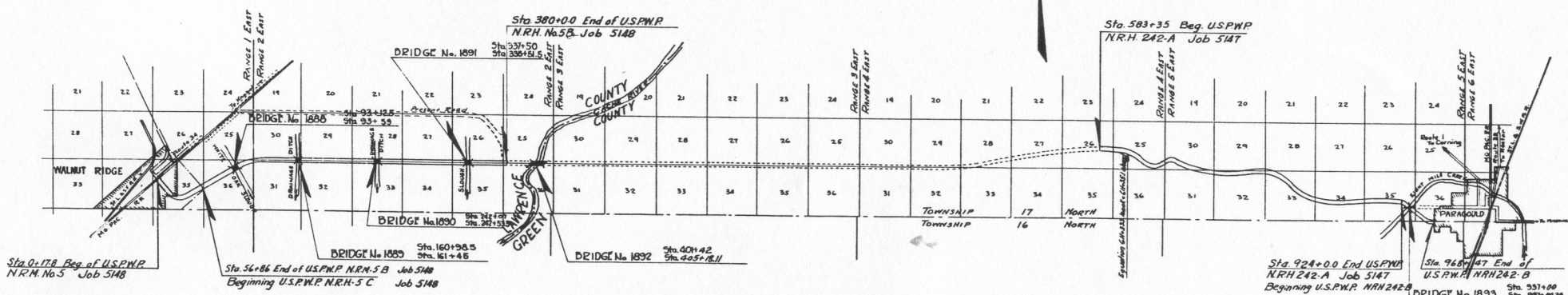
INDEX OF SHEETS

Table listing drawing numbers and descriptions for various sheets, including title sheet, layout, and details.

FISCAL YEAR table with columns for year, state, and sheet number.

QUANTITIES table header with columns for item number, item name, unit, and quantity.

Table of quantities for various construction items like excavation, concrete, steel, and lumber.



NOTE: ROAD AND GRADING TO BE CONSTRUCTED UNDER STATE JOBS NO. 5147 & 5148.

U.S.P.W. Proj. N.R.H.5-D - Bridges No. 1888, 1889, 1890, 1891, 1892
U.S.P.W. Proj. N.R.H.242-B - Bridge No. 1893

Specifications approved by Chief, Bureau of Public Roads, September 28, 1925, and adopted by State Highway Commission May 30, 1926 with revisions and Special Provisions as follows:

REVISIONS table with columns for revision letter, date, and description.

SPECIAL PROVISIONS table with columns for item, number of sheets, and date.

LAYOUT

Table showing project and bridge lengths in feet and miles for N.R.H.5-D and N.R.H.242-B.

Revised October 6/1934 L.A.C.

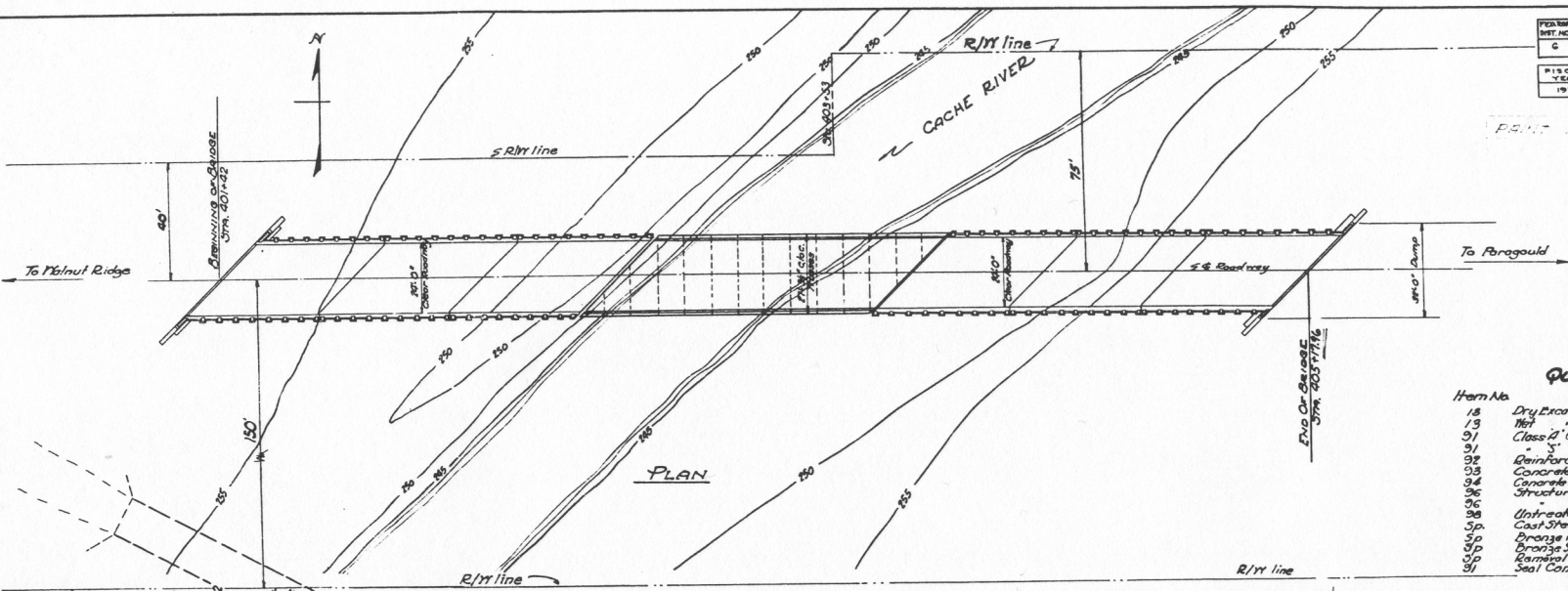
APPROVED section with signature lines for Engineer and Chairman.

N.B. Lawrence
BRIDGE ENGINEER

BRIDGES No. 1888 to 1893 incl. DRAWING No. 9825

PERMANENT NO.	STATE	U.S.P.W. PROJ. NO.	FISCAL YEAR	SHEET NO.	TOTAL SHEETS
C	Ark.	MOH 50	1934	4	13
FISCAL YEAR	Sheet Job No.	SHEET NO.	TOTAL SHEETS		
1934	3162	4	17		

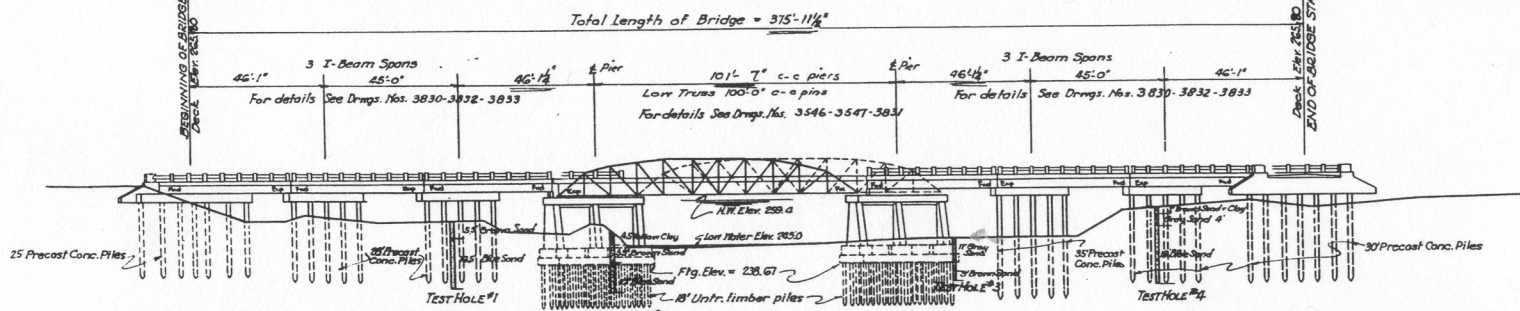
PRINTED AT THE STATE ENGINEERING OFFICE, LITTLE ROCK, ARK.



Present Bridge 2-30 I-Beam approach spans & 160' Steel Truss, 12' R/Wy & Conc substruct. To be removed by Bridge Contractor.

QUANTITIES

Item No.	Item	Quantity	Unit
18	Dry Excavation For Structures	160	Cu. Yds.
13	Mortar	244	Cu. Yds.
91	Class A Concrete For Bridges	207.74	Cu. Yds.
91	" " " " " "	313.41	Cu. Yds.
92	Reinforcing Steel	85.594	Lbs.
93	Concrete Piling	990	Lin. Ft.
94	Concrete Bailing For Bridges	358	Lin. Ft.
96	Structural Steel in Beam Spans	178,072	Lbs.
96	" " Truss	129,970	Lbs.
98	Untreated Timber Piling	1540	Lin. Ft.
99	Cast Steel and Cast Iron	3618	Lbs.
99	Precast Project Marker Plates	2	Each
99	Bridge State Bridge Name Plates	2	Each
99	Removal of Present Bridge	Lump Sum	
99	Seal Concrete For Bridges	74.52	Cu. Yds.



General Notes

Lengths of piling shown are for estimating quantities only. Actual lengths are to be determined in the field.

Volume occupied by embedded pile hearts is not included in pay quantities for concrete.

All exposed corners of concrete work to have 3/4" chamfer unless otherwise shown.

Bar Lists and Bending diagrams of reinforcing steel must be submitted and approved before fabrication is begun.

Specifications: Arkansas Standard Road and Bridge Specifications adopted May 30th, 1925 and Revised.

Quantity and pile lengths
A.H. 6-28-34
Timber test piles 455 6-12-34

Span dimensions
length of bridge, etc. at end of
bridge 4-25-34

**LAYOUT OF
CACHE RIVER BRIDGE
WALNUT RIDGE-PARAGOULD ROAD
LAWRENCE & GREEN COUNTIES
ROUTE 25 SEC. 8
ARKANSAS STATE HIGHWAY COMMISSION
LITTLE ROCK, ARK.**

Drawn By: G.W. Date: 6-5-34
Traced By: J.A.S. Date: 8-28-34
Checked By: Date: _____
Scale: 1" = 20'

N.B. Brown
Bridge Engineer

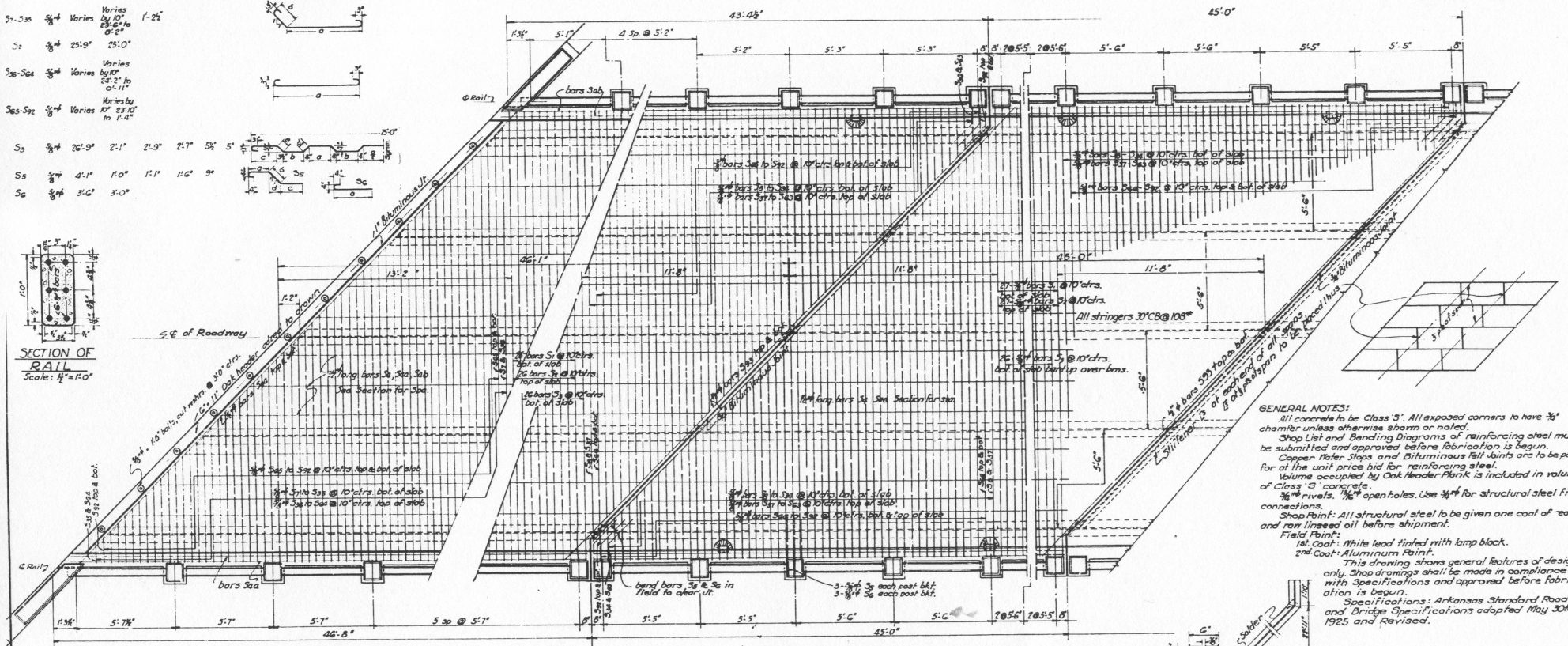
BRIDGE NO. 1892 DRAWING NO. 3828

LIST OF BENT BARS

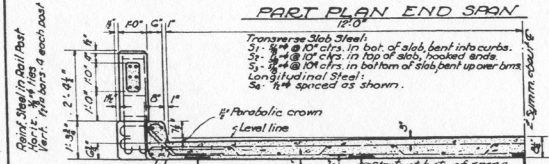
Mark	Size	Length	a	b	c	d	e	Diagram
S ₁	3/4"	26'-9"	23'-7"	1'-2"				
S ₁₋₃ s	3/4"	Varies by 10"	Varies by 10"	1'-2"				
S ₂	3/4"	25'-0"	25'-0"					
S _{2s-3s}	3/4"	Varies by 10"	Varies by 10"					
S _{2s-5s}	3/4"	Varies by 10"	Varies by 10"					
S ₃	3/4"	26'-9"	2'-1"	21'-9"	2'-7"	5"	5"	
S ₄	3/4"	4'-1"	1'-0"	1'-1"	1'-6"	9"		
S ₅	3/4"	3'-6"	3'-0"					

PERIOD	SHEET	PROJ.	FIELD	SHEET	TOTAL
NO.	NO.	NO.	NO.	NO.	NO.
1034	9	ARK. HIGHWAY	1934	9	19

FISCAL YEAR	STATE	JOB NO.	SHEET NO.	TOTAL SHEETS
1934	SIGZ		10	17

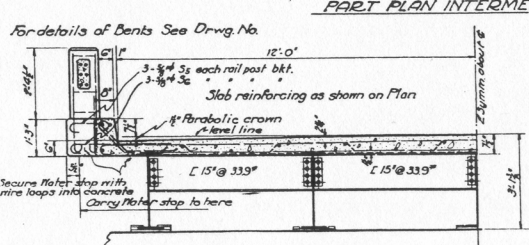


SECTION OF RAIL
Scale: 1/2" = 1'-0"

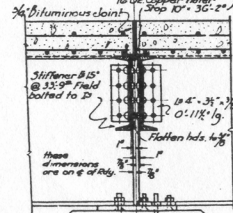
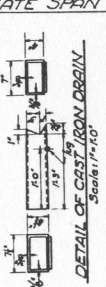


TRANSVERSE SLAB STEEL:
 S₁ - 3/4" @ 10" c/c in bot. of slab, bent into curbs.
 S₂ - 3/4" @ 10" c/c in top of slab, hooked ends.
 S₃ - 3/4" @ 10" c/c in bottom of slab, bent up over bents.
 Longitudinal Steel:
 S₄ - 3/4" spaced as shown.

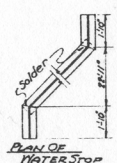
HALF SECTION AT MID-SPAN
Scale: 1/4" = 1'-0"



HALF SECTION AT BENT
Scale: 1/4" = 1'-0"



EXPANSION JOINT DETAIL
Scale: 1/4" = 1'-0"



PLAN OF WATER STOP

GENERAL NOTES:
 All concrete to be Class 3". All exposed corners to have 3/4" chamfer unless otherwise shown or noted.
 Shop List and Bending Diagrams of reinforcing steel must be submitted and approved before fabrication is begun.
 Copper Water Stops and Bituminous Fill Joints are to be paid for at the unit price bid for reinforcing steel.
 Volume occupied by Oak Header Blank is included in volume of Class 3" concrete.
 3/8" rivets, 1/2" open holes. Use 3/4" for structural steel field connections.
 Shop Paint: All structural steel to be given one coat of red lead and one linseed oil before shipment.
 Field Paint:
 1st Coat: White lead tinted with lamp black.
 2nd Coat: Aluminum Paint.
 This drawing shows general features of design only. Shop drawings shall be made in compliance with Specifications and approved before fabrication is begun.
 Specifications: Arkansas Standard Road and Bridge Specifications adopted May 30th, 1925 and Revised.

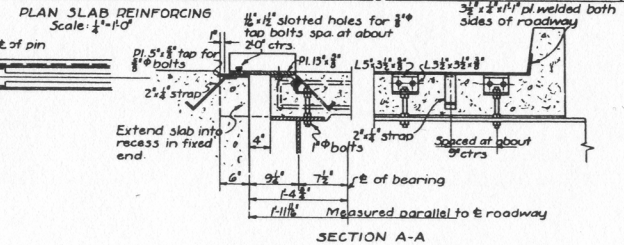
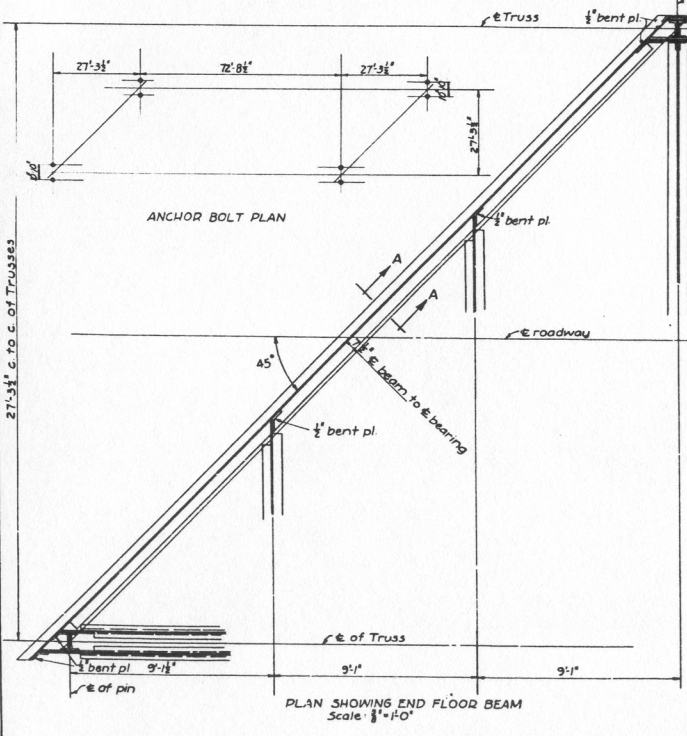
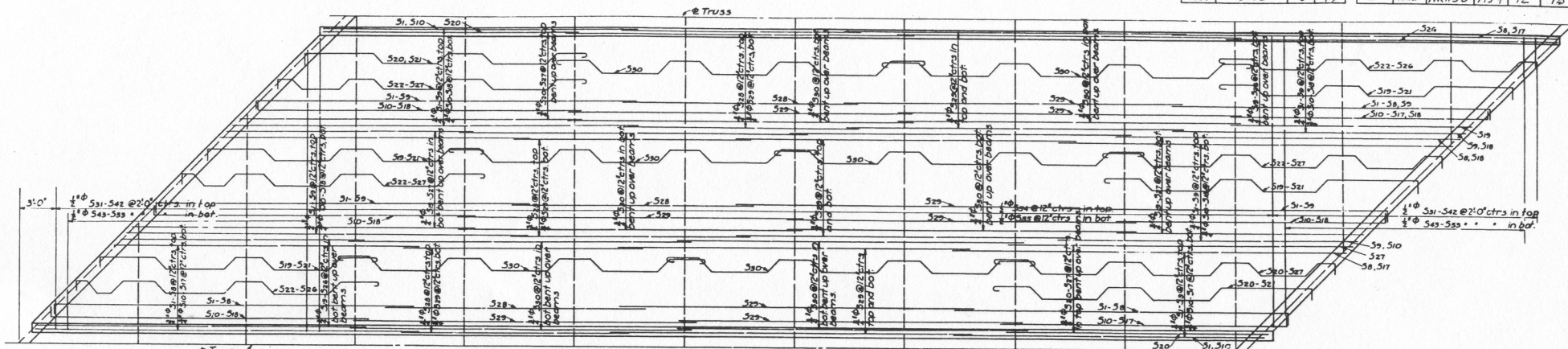
DETAILS OF 45'-0" I-BEAM SPAN
45° SKY, CONC. DECK, CONC. PILE BENTS
24'-0" CLEAR ROADWAY

ARKANSAS STATE HIGHWAY COMMISSION
 LITTLE ROCK, ARK.

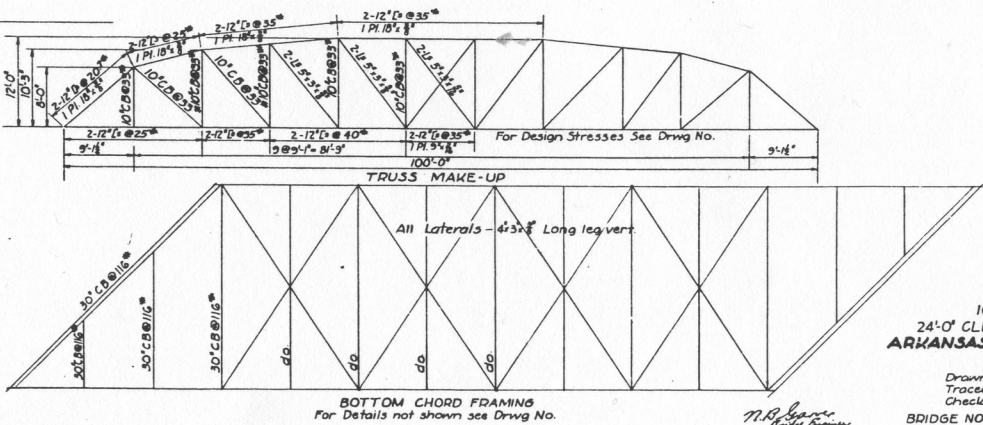
Drawn By: *W. B. W.* Date: 5-23-34 Scale: 1/4" = 1'-0"
 Traced By: *E. A. W.* Date: 5-23-34 and as noted.
 Checked By: *W. B. W.* Date: _____

BRIDGE NO. 1892 DRAWING NO. 3832

FISCAL YEAR	State Job No.	SHEET NO.	TOTAL SHEETS	FED. ROAD DIST. NO.	STATE	PROJECT NO.	FISCAL YEAR	SHEET NO.	TOTAL SHEETS
1934	51G2	3	17	6	ARK.	VRH 5D 173	12	75	



Mark	Size	Length	A	B	C	Bending Diagram
S1-S9	3/8" φ	27'-7 1/2"	5'	26'-7 1/2"	5'	[Bending Diagram for S1-S9]
S10-S18	3/8" φ	27'-7 1/2"	5'	23'-7 1/2"	5'	
S43-S53	3/8" φ	25'-6"	11 1/2'	2'-3"	2'-3"	
S55	1/2" φ	27'-4"				[Bending Diagram for S55]
S9-S21	3/8" φ	25'-0" to 25'-0"	3'-11" to 3'-11"			[Bending Diagram for S9-S21]
S22-S27	3/8" φ	26'-3" to 3'-3"	1'-2" to 2'-0"	2'-4" to 4'-6"	2'-6" to 3'-6"	[Bending Diagram for S22-S27]
S30	3/8" φ	3'-8"				[Bending Diagram for S30]



SPECIAL DETAILS
 100'-0" LOW TRUSS SPAN
 24'-0" CLEAR RDWY, THREE-PANEL SKEW RT.
 ARKANSAS STATE HIGHWAY COMMISSION
 LITTLE ROCK, ARK.

Drawn by: B.V. Date: 5-28-34
 Traced by: A Date: 5-29-34 Scale: As shown.
 Checked by: Date:

N.R. [Signature]

